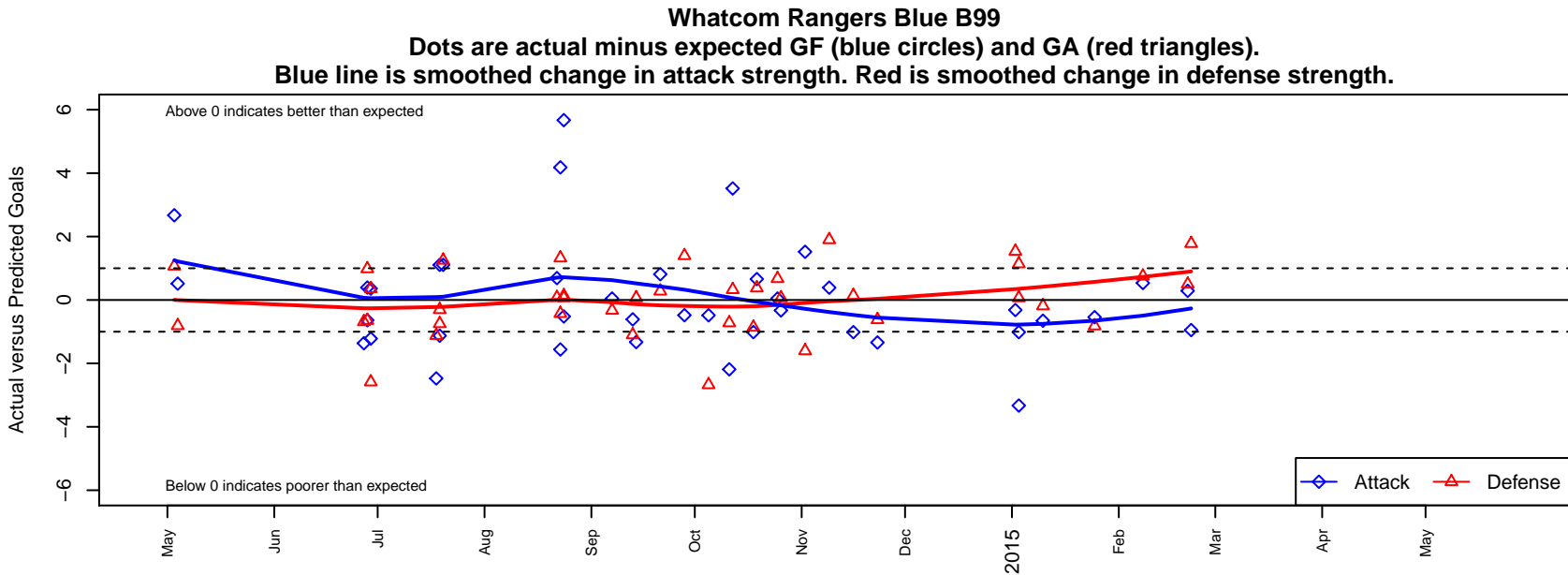


Whatcom Rangers Blue B99

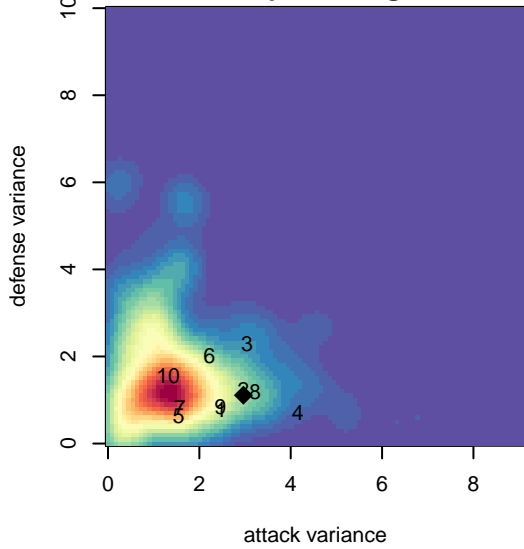
Whatcom FC Rangers
 Bellingham, WA
 B99 total strength=1339
 attack=8.32 defense=5.04
 fall league = RCL B99 Div 3

alt names used:
 59 WFC Rangers BU15 Blue
 WFCR Blue BU15
 WFC Rangers B99 Blue
 Whatcom FC Ra – BU99 Blue
 WHATCOM FOOTBALL RANGERS WFC RAN
 Whatcom FC Ra – BU99 Blue

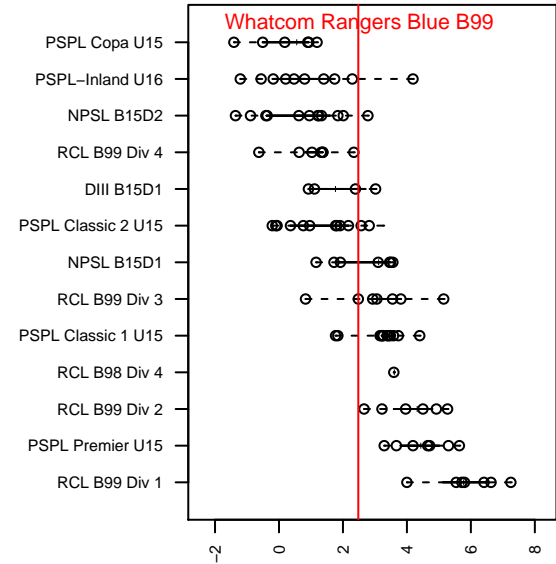
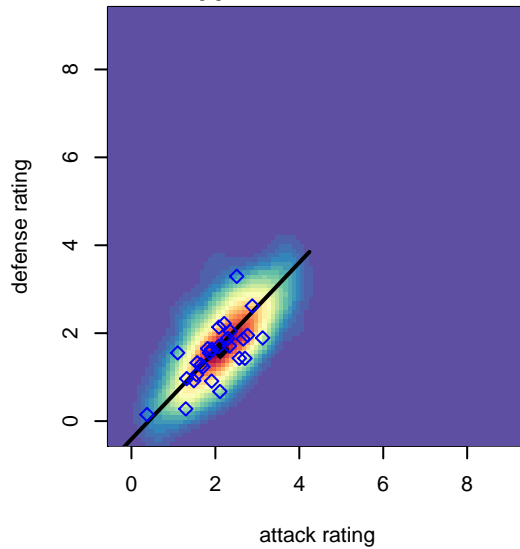
Venues played:
 2013 Challenge Cup B99 Division 2 – Challeng
 2014 Baker Blast COPA U15
 2014 Beaverton Cup BU15 Silver
 2014 REDAPT Cup Silver U15
 2014 RCL B99 Div 3
 2014 PacNW Winter Classic Premier U15
 2014 WYS Presidents Cup B99 Division 2



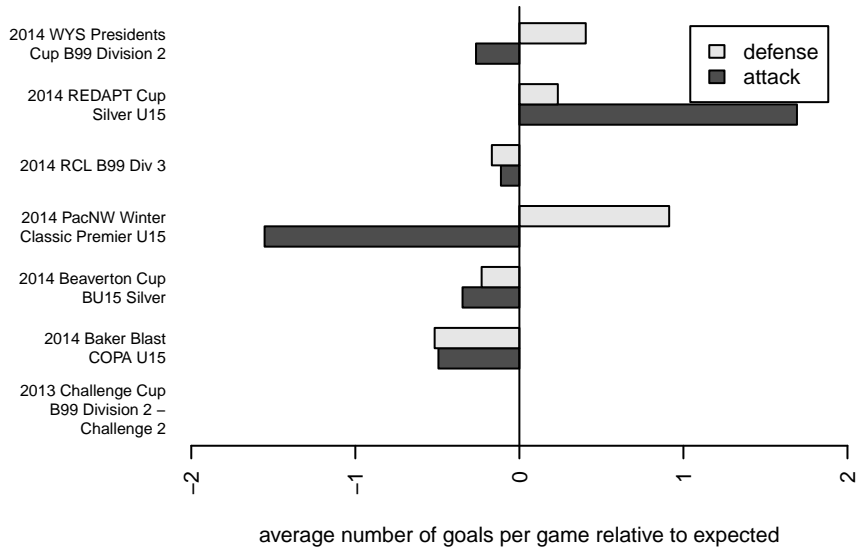
**attack and defense variance (black dot)
relative to other teams
and top 10 in region**



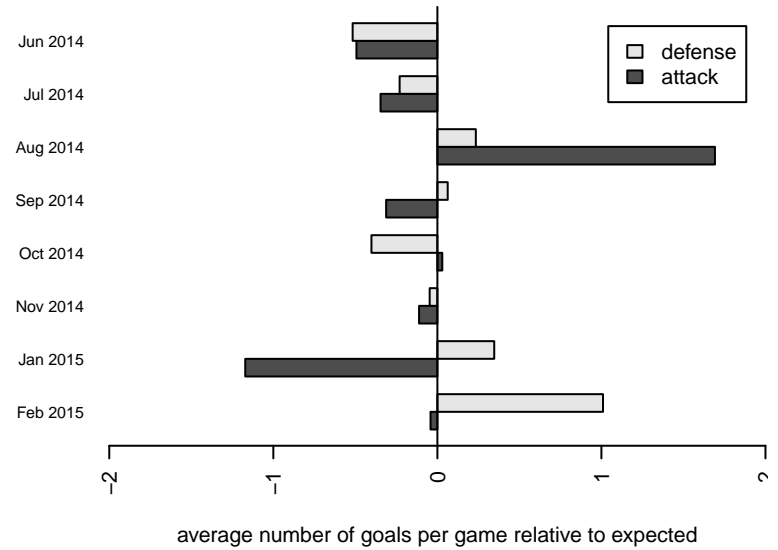
**attack and defense rating
relative to others at age
and all opponents in last 13 months**



Performance relative to 13 month average



Performance relative to 13 month average



| date | home | | away | | venue | pred.home | pred.away |
|------------|------------------------------|---|--------------------------------|---|--|-----------|-----------|
| 2015-02-22 | Whatcom Rangers Blue B99 | 1 | Washington Timbers Forrest B99 | 0 | 2014 WYS Presidents Cup B99 Division 2 | 1.95 | 1.78 |
| 2015-02-21 | NWN White B99 | 1 | Whatcom Rangers Blue B99 | 2 | 2014 WYS Presidents Cup B99 Division 2 | 1.50 | 1.71 |
| 2015-02-08 | Whatcom Rangers Blue B99 | 7 | Slammers White B99 | 0 | 2014 WYS Presidents Cup B99 Division 2 | 6.46 | 0.75 |
| 2015-01-25 | WA Rush B99 | 2 | Whatcom Rangers Blue B99 | 2 | 2014 WYS Presidents Cup B99 Division 2 | 1.18 | 2.54 |
| 2015-01-10 | Whatcom Rangers Blue B99 | 4 | Snohomish United Red B99 | 2 | 2014 WYS Presidents Cup B99 Division 2 | 4.65 | 1.81 |
| 2015-01-03 | Whatcom Rangers Blue B99 | 0 | PacNW Blue B99 | 1 | 2014 PacNW Winter Classic Premier U15 | 1.01 | 2.14 |
| 2015-01-03 | Whatcom Rangers Blue B99 | 0 | Harbor Premier Green B99 | 1 | 2014 PacNW Winter Classic Premier U15 | 3.33 | 1.07 |
| 2015-01-02 | Vancouver Island Wave 2000B | 1 | Whatcom Rangers Blue B99 | 0 | 2014 PacNW Winter Classic Premier U15 | 2.53 | 0.32 |
| 2014-11-23 | Whatcom Rangers Blue B99 | 0 | Washington Timbers Green B99 | 4 | 2014 RCL B99 Div 3 | 1.34 | 3.38 |
| 2014-11-16 | Whatcom Rangers Blue B99 | 0 | PacNW Blue B99 | 2 | 2014 RCL B99 Div 3 | 1.01 | 2.14 |
| 2014-11-09 | Whatcom Rangers Blue B99 | 1 | Crossfire Premier B B99 | 2 | 2014 RCL B99 Div 3 | 0.61 | 3.90 |
| 2014-11-02 | Whatcom Rangers Blue B99 | 3 | SSC Shadow A B99 | 6 | 2014 RCL B99 Div 3 | 1.48 | 4.40 |
| 2014-10-26 | Harbor Premier Green B99 | 1 | Whatcom Rangers Blue B99 | 3 | 2014 RCL B99 Div 3 | 1.07 | 3.33 |
| 2014-10-25 | Slammers Orange B99 | 2 | Whatcom Rangers Blue B99 | 2 | 2014 RCL B99 Div 3 | 2.67 | 1.95 |
| 2014-10-19 | Washington Timbers Green B99 | 3 | Whatcom Rangers Blue B99 | 2 | 2014 RCL B99 Div 3 | 3.38 | 1.34 |
| 2014-10-18 | PacNW Blue B99 | 3 | Whatcom Rangers Blue B99 | 0 | 2014 RCL B99 Div 3 | 2.14 | 1.01 |
| 2014-10-12 | FC Alliance B B99 | 2 | Whatcom Rangers Blue B99 | 5 | 2014 RCL B99 Div 3 | 2.33 | 1.48 |
| 2014-10-11 | Blackhills FC Black B99 | 4 | Whatcom Rangers Blue B99 | 0 | 2014 RCL B99 Div 3 | 3.28 | 2.19 |
| 2014-10-05 | Whatcom Rangers Blue B99 | 1 | FC Alliance B B99 | 5 | 2014 RCL B99 Div 3 | 1.48 | 2.33 |
| 2014-09-28 | SSC Shadow A B99 | 3 | Whatcom Rangers Blue B99 | 1 | 2014 RCL B99 Div 3 | 4.40 | 1.48 |
| 2014-09-21 | Whatcom Rangers Blue B99 | 3 | Blackhills FC Black B99 | 3 | 2014 RCL B99 Div 3 | 2.19 | 3.28 |
| 2014-09-14 | Whatcom Rangers Blue B99 | 2 | Harbor Premier Green B99 | 1 | 2014 RCL B99 Div 3 | 3.33 | 1.07 |
| 2014-09-13 | Crossfire Premier B B99 | 5 | Whatcom Rangers Blue B99 | 0 | 2014 RCL B99 Div 3 | 3.90 | 0.61 |
| 2014-09-07 | Whatcom Rangers Blue B99 | 2 | Slammers Orange B99 | 3 | 2014 RCL B99 Div 3 | 1.95 | 2.67 |
| 2014-08-24 | Whatcom Rangers Blue B99 | 9 | Harbor Premier Green B99 | 1 | 2014 REDAPT Cup Silver U15 | 3.33 | 1.07 |
| 2014-08-24 | Whatcom Rangers Blue B99 | 2 | PacNW White B99 | 1 | 2014 REDAPT Cup Silver U15 | 2.52 | 1.13 |
| 2014-08-23 | NWN Blue B99 | 1 | Whatcom Rangers Blue B99 | 0 | 2014 REDAPT Cup Silver U15 | 0.57 | 1.56 |
| 2014-08-23 | Seattle United W Blue B99 | 0 | Whatcom Rangers Blue B99 | 8 | 2014 REDAPT Cup Silver U15 | 1.32 | 3.82 |

| date | home | | away | | venue | pred.home | pred.away |
|-------------|-----------------------------------|---|-----------------------------|---|--|------------------|------------------|
| 2014-08-22 | Crossfire Premier C B99 | 1 | Whatcom Rangers Blue B99 | 3 | 2014 REDAPT Cup Silver U15 | 1.08 | 2.31 |
| 2014-07-20 | ETFC Celtic Black B99 | 0 | Whatcom Rangers Blue B99 | 3 | 2014 Beaverton Cup BU15 Silver | 1.25 | 1.89 |
| 2014-07-19 | Whatcom Rangers Blue B99 | 3 | ETFC Celtic Black B99 | 2 | 2014 Beaverton Cup BU15 Silver | 1.89 | 1.25 |
| 2014-07-19 | PCU Red B99 | 2 | Whatcom Rangers Blue B99 | 0 | 2014 Beaverton Cup BU15 Silver | 1.70 | 1.13 |
| 2014-07-18 | Washington Timbers Crimson B99 | 2 | Whatcom Rangers Blue B99 | 1 | 2014 Beaverton Cup BU15 Silver | 0.88 | 3.47 |
| 2014-06-29 | Chilliwack FC Selects 2000B | 1 | Whatcom Rangers Blue B99 | 2 | 2014 Baker Blast COPA U15 | 1.35 | 1.64 |
| 2014-06-29 | Crossfire Select Taylor B99 | 5 | Whatcom Rangers Blue B99 | 0 | 2014 Baker Blast COPA U15 | 2.41 | 1.22 |
| 2014-06-28 | Seattle United Shoreline Blue B99 | 1 | Whatcom Rangers Blue B99 | 2 | 2014 Baker Blast COPA U15 | 1.98 | 1.61 |
| 2014-06-28 | Whatcom Rangers Blue B99 | 1 | Chilliwack FC Selects 2000B | 2 | 2014 Baker Blast COPA U15 | 1.64 | 1.35 |
| 2014-06-27 | Whatcom Rangers Blue B99 | 6 | New Millenium FC B99 | 1 | 2014 Baker Blast COPA U15 | 7.36 | 0.31 |
| 2014-05-04 | Dragons FC B99 | 4 | Whatcom Rangers Blue B99 | 2 | 2013 Challenge Cup B99 Division 2 – Chal | 3.19 | 1.48 |
| 2014-05-03 | Whatcom Rangers Blue B99 | 6 | Harbor Premier Green B99 | 0 | 2013 Challenge Cup B99 Division 2 – Chal | 3.33 | 1.07 |
| 2014-04-26 | Eastside FC Blue B99 | 0 | Whatcom Rangers Blue B99 | 1 | 2013 Challenge Cup B99 Division 2 – Chal | NA | NA |